

United Food Bank and Services of Plant City, Inc.

Building Our Future

The New Building of 2024



If we can strengthen more individuals and families with food security, health, and economic recovery in their sights—and knowledge of resources to help them achieve it—we pledge to do so, on behalf of the following nine communities we serve:
Plant City, Dover, Thonotosassa, Seffner, Bealsville, Brandon, Valrico, Lithia, and Riverview.

*Your generosity toward our capital goal
will make it possible.*

Strengthening Their Future

We set out in 2020 to conduct a “new building” feasibility study, with the help of a principal architect and a technical grant from Hillsborough County to fund this early, fact-finding exercise. What we discovered is that a new building is needed, on our existing site at 702 E. Alsobrook Street, with a grand opening set for 2024.

Anyone driving behind our building will see how, for a few years, we have cobbled together rented, refrigerated storage units that help us attempt to meet current demand. Logistical constraints, including the absence of a loading dock, for

the 10 years we've occupied the current space, have resulted in the loss of donations.

We started out to alleviate hunger in Plant City in 1991.

Today, with an \$8.2 million budget and a four-star rating from

Charity Navigator, we are able to provide food security to a total of nine communities in East Hillsborough, including Plant City, Dover, Thonotosassa, Seffner, Bealsville, Brandon, Valrico, Lithia, and Riverview.

We realize that with poverty, including low-income individuals in our area who seek additional education, employment, advancement, or relief from a life crisis, there can be adverse effects on their health and well-being. There can also be direct impacts and costs to the surrounding community without assistance and compassionate solutions for a hand up and not a hand out.

A larger facility will allow United Food Bank to take a more holistic approach to food security that can set individuals on the path to self-sufficiency with a comprehensive intake process and system for referrals.

A new facility means we can accept more donations and make a greater difference in our nine-community service area.

Growth in Service Over the Last Five Years:

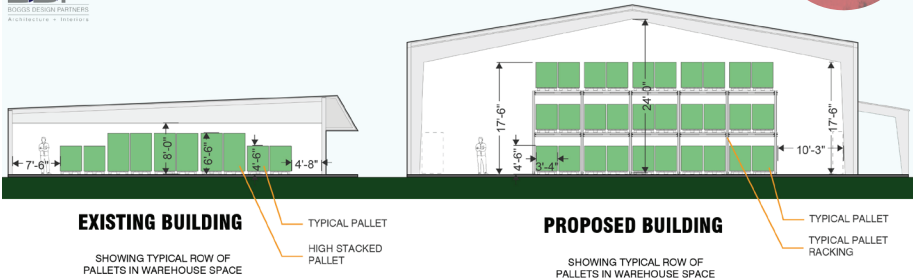
Services	2016-2017	2021-2022
Services to Individuals	40,000	152,607
Services to Families	12,000	60,147
People Served	3,026	16,880
Inbound Food in Pounds	155,912	2,724,927
Outbound Food in Pounds	157,783	2,759,070

*Strong
Futures Start
Today*

By Building Together

COMPARISON OF HEIGHT AND STORAGE CAPACITY

UNITED FOOD BANK OF PLANT CITY



Increases in space include the following:	Existing Building	Proposed Building
Total volume	56,980 ft ³	111,038 ft ³
Ceiling	8 ft	16 ft
Offices	2,000 ft ²	3,547 ft ²
Intake stations	219 ft ²	360 ft ²
Classroom	606 ft ²	808 ft ²
Sorting/kids room	0 ft ²	1,847 ft ²
Warehouse storage	3,940 ft ²	4,937 ft ²
Pallets (accessible by forklift)	40	96

On behalf of the entire Board, we extend our appreciation to the cornerstone donors who have launched our building campaign:

- Driscoll's
- Florida House of Representatives Local Support Grant via Representative Lawrence McClure
- Hillsborough County grant via Commissioner Stacy White
- Florida Strawberry Festival, via Paul Davis and team
- Hillsborough County Sheriff Chad Chronister

Dodie White & *Mary Heysek*
Board Chair Executive Director



With a larger warehouse and a loading dock at standard height, a new building ensures all donations from our growers, supermarkets, distributors, FEMA, and other community partners can be accepted by this food bank.



Board of Directors

George Banning

Matthew Buzza

Silvia Dodson

Cathy Jimenez

Clay Keel

Bill McDaniel

Marsha Passmore

Rev. Dean Pfeffer

Jon Poppell

Daniel Raulerson

Bruce Rodwell

Bruce Sperry

William Thomas, Sr.

Brian West, Emeritus

Ryan Whitaker

Dodie White

Stacy White



Our mission is to provide assistance for those in need, moving them from a state of hunger and impoverishment to self-sufficiency, empowerment, and self-reliance.